



HARLEQUIN

REAL. LIVE. THEATRE.

The South Sound's only Professional Theatre

Season 2020  
*Transformation*

All art is transformation. Whether the medium be clay or paint, movement or spoken word, shadows or light, as artists we seek to transform our world into beauty and learning. Hopefully, we enlighten.

We would like to invite you to join us as we embark on our 29th Season: "Transformation". We will take you from the shores of South Puget Sound to 1942 Berlin, from the deserts of Central China to the plains of Central Iowa, and from the historic homes in Beech Creek, Pennsylvania to the historic stories of the Brothers Grimm.. We will carry you from the teenage angst of growing up in a confounding world to the apprehension of seeing the end of life's journey approaching.

As we prepare to transform these written texts into movement and light, spoken word and shadows, we hope that you will see the stories of transformation before you in our work. We hope you will find - within yourselves - some kernel of the same. We hope you will see the beauty we see and will recognize the journey necessary for learning. We hope to enlighten.

I'm excited to share these nine plays with you and to embark on this journey. Your seat is waiting. Please, join us.



Aaron Lamb  
Producing Artistic Director

Cover Artist: Becky Knold

We are honored to feature the works of local South Sound artists in our 2020 Season: "Transformation." We will also feature their work and the works of other local artists in our lobby during the run of our shows. We are thankful and grateful for their contribution.





HARLEQUIN

# *Season 2020* **Transformation**

## **NOISES OFF**

JANUARY 17 - FEBRUARY 8

## **THE HIGHEST TIDE**

FEBRUARY 28 - MARCH 21

## **FOR PETER PAN ON HER 70TH BIRTHDAY**

APRIL 3 - 19

## **A BRIGHT ROOM CALLED DAY**

MAY 1 - 23

## **INTO THE WOODS**

JUNE 19 - JULY 18

## **SNOW IN MIDSUMMER**

AUGUST 21 - SEPTEMBER 12

## **THIS FLAT EARTH**

SEPTEMBER 4 - 20

## **FUN HOME**

OCTOBER 2 - 24

## **A CHRISTMAS CAROL**

NOVEMBER 27 - DECEMBER 31



# NOISES OFF

by Michael Frayne

## THE STATE THEATRE

PREVIEWS: January 15-16

RUNS: January 17 - February 8

Called "the funniest farce ever written," (Clive Barnes, *The New York Post*) *Noises Off* presents a hilarious behind-the-scenes peek at an acting troupe rehearsing and performing the farce "Nothing's On." Despite nerves, dropped lines and technical difficulties, they make it through final dress rehearsal to opening night. As time goes by, things deteriorate until pandemonium ensues and ax-wielding co-stars, drunken cast members, and misplaced sardines take center stage during a disaster of a performance that threatens to jinx the old saying, "The show must go on." In three acts: Act One, Act One, and Act One.

Artist: Sharon Styer

**LOCAL AUTHOR**

## THE HIGHEST TIDE

from the novel by Jim Lynch,  
adapted by Jane Jones for  
Book-It Repertory Theatre

### THE STATE THEATRE

PREVIEWS: February 26-27

RUNS: February 28 - March 21

The beach talks to Miles O'Malley. Obsessed with all things aquatic, 13-year-old, stature-challenged Miles loves combing the tidal beaches near his Puget Sound home in the middle of the night. When one of his discoveries lands him unexpectedly in the news, he is launched into involuntary celebrity, shaking his world in a way that is only topped by the Nisqually earthquake. A sensory experience emanates from the pages of local author Jim Lynch's bestselling novel, which instantly transports us beneath the waters of a marine world teeming with infinite life and exquisite possibility.

Artist: Nikki McClure





**NEW PLAY**

## **FOR PETER PAN ON HER 70TH BIRTHDAY**

by Sarah Ruhl

**THE WASHINGTON CENTER BLACK BOX**

PREVIEWS: April 2

RUNS: April 3 - 19

When Ann thinks of her father, she immediately remembers playing Peter Pan in her hometown theater in Iowa, particularly when he used to bring her flowers after her performance. Her memory is jogged by the fact that she and her four siblings are in their father's hospital room during his final moments. His death sparks a conversational wake that includes everything from arguments over politics to when each sibling realized that they grew up. A loving look at a family's view of death, life, and the allure of never growing up.

Artist: Susan Aurand

# A BRIGHT ROOM CALLED DAY

by Tony Kushner

## THE STATE THEATRE

PREVIEWS: April 29-30

RUNS: May 1 - 23

From the Pulitzer-winning playwright behind *Angels in America* comes a dramatic parable for our time. *A Bright Room Called Day* follows a group of artists and political activists struggling to preserve themselves in 1930s Berlin as the Weimar Republic surrenders to the seduction of fascism. Often exquisitely lyrical, always exhilaratingly intelligent, the poetic world of the play moves beyond the bounds of historical reality with the morally outraged outpourings of a contemporary New York woman. Her fury brings into stark relief the discomfiting similarities between then and now, and challenges us to remember that although evil may seem inevitable, it is never irresistible.

Artist: Hart James





# INTO THE WOODS

Music and lyrics by Stephen Sondheim

Book by James Lapine

## THE STATE THEATRE

PREVIEWS: June 17-18

RUNS: June 19 - July 18

MUSICAL

Winner of five Tony Awards, seven Drama Desk awards, and four Olivier Awards, *Into the Woods* brings *The Brothers Grimm* onstage with an epic fairytale about wishes, family, and the choices we make. When Cinderella, Little Red Riding Hood, Jack (the one with the beanstalk), Rapunzel, and a Baker and his wife venture into the woods, “Happily Ever After” is only the beginning of their journey. The woods are magical, dark, and deep, and filled with witches, wolves, giants, and mysterious strangers. Wishes do come true, but at a price. One of Stephen Sondheim’s most celebrated scores and most popular musicals, *Into the Woods* is sure to be a holiday treat for the whole family.

Artist: Kathy Gore Fuss

**NEW PLAY**

# SNOW IN MIDSUMMER

by Frances Ya Chu Cowhig

Based on the classical Chinese drama,  
The Injustice to Dou Yi that Moved Heaven and Earth  
by Guan Hanqing

## THE STATE THEATRE

PREVIEWS: August 19-20

RUNS: August 21 - September 12

Executed for a murder she did not commit, young widow Dou Yi vows that if she is innocent, snow will fall in midsummer and a catastrophic drought will strike. Three years later, a businesswoman visits the parched, locust-plagued town to take over an ailing factory. When her young daughter is tormented by an angry ghost, the new factory owner must expose the injustices Dou Yi suffered before the curse destroys every living thing. A contemporary re-imagining of one of China's most famous classical dramas, *Snow in Midsummer* was first produced as part of the "Chinese Translations Project" at the Royal Shakespeare Company. A second production was received in 2018 at the Oregon Shakespeare Festival.

Artist: Lynette Charters





NEW PLAY

## THIS FLAT EARTH

by Lindsey Ferrentino

### THE WASHINGTON CENTER BLACK BOX

PREVIEWS: September 3

RUNS: September 4 - 20

At a middle school in a seaside town, the unthinkable has happened, placing a bewildered community in the national spotlight. Stuck at home in a state of shocked limbo, Julie and Zander, two twelve-year-olds, try to make sense of the chaos they witnessed, their awkward crushes, and an infinitely more complicated future — but the grown-ups are no help at all. An urgent response to our times, *This Flat Earth* is a startling and deeply felt story of growing up in our confounding world.

Artist: Evan Clayton Horback

# FUN HOME

by Lisa Kron, Jeanine Tesori, and Alison Bechdel

## THE STATE THEATRE

PREVIEWS: September 30 - October 1

RUNS: October 2 - October 24



MUSICAL

Winner of five 2015 Tony Awards including Best Musical, *Fun Home* is a refreshingly honest, wholly original musical about seeing your parents through grown-up eyes. When her father dies unexpectedly, graphic novelist Alison dives deep into her past to tell the story of the volatile, brilliant, one-of-a-kind man whose temperament and secrets defined her family and her life. Moving between past and present, Alison relives her unique childhood playing at the family's Bechdel Funeral Home, her growing understanding of her own sexuality, and the looming, unanswerable questions about her father's hidden desires.

Artist: Irene Osbourn



# OUR TRANSFORMATION

As we enter our new year, we enter a new chapter. We welcome transformation with Season 29.



## SEASON MOVES TO CALENDAR YEAR

Our 2020 season will run from January - December. For this first run of this new calendar, we will include the 2019 Holiday show in the season subscription. The 2020 Holiday show can be added (with preferred seating) as an add on.



## OPENING NIGHT MOVES TO FRIDAY

First Thursday subscribers can choose to continue on Thursdays, or move to Friday opening night.



## WEDNESDAY AND THURSDAY PREVIEWS

First Wednesday and Thursday will become paid previews. No subscriptions will be sold (except for current first Thursday renewals), but single tickets will be at a discount.



## EVENING SHOWS AT 7:30

All evening performances will move to 7:30pm, and all matinees will begin at 2pm.



## SATURDAY MATINEES

We're adding Saturday matinees at 2pm to every Saturday of the run.



## EXPANDED SEASON

In 1992, Harlequin Productions began with a short season: three offerings of two one-act plays in the Black Box at Washington Center for the Performing Arts. By 2019 we were producing 7 plays in our own performance space.

For our transformation, we're going back to the beginning, and producing two additional plays in the Black Box, for a total season offering of 9 shows.

## Flexible Theatre Space

No set seat map for The Washington Center - subscriber seats will be assigned based on noted preference.

## Half-capacity of the State Theatre

The Black Box is smaller - seating availability will be limited. Subscribe or get your tickets early to ensure you have a seat at the show.

# SUBSCRIBERS SAVE 25% OFF SINGLE TICKET PRICES

Other benefits include free exchanges and replaces, half-price repeat tickets, and priority advance seating. Compare ticket packages below.

## 9 PLAY SUBSCRIPTION

Renewing subscribers are guaranteed the same seats. The quintessential Harlequin season subscription: see all the shows, get the best seats.

## 7 PLAY SUBSCRIPTION

Renewing subscribers are guaranteed same seats in the State Theatre. The State Theatre package includes all 7 shows produced at the State Theatre. The Washington Center shows are not included in this subscription.

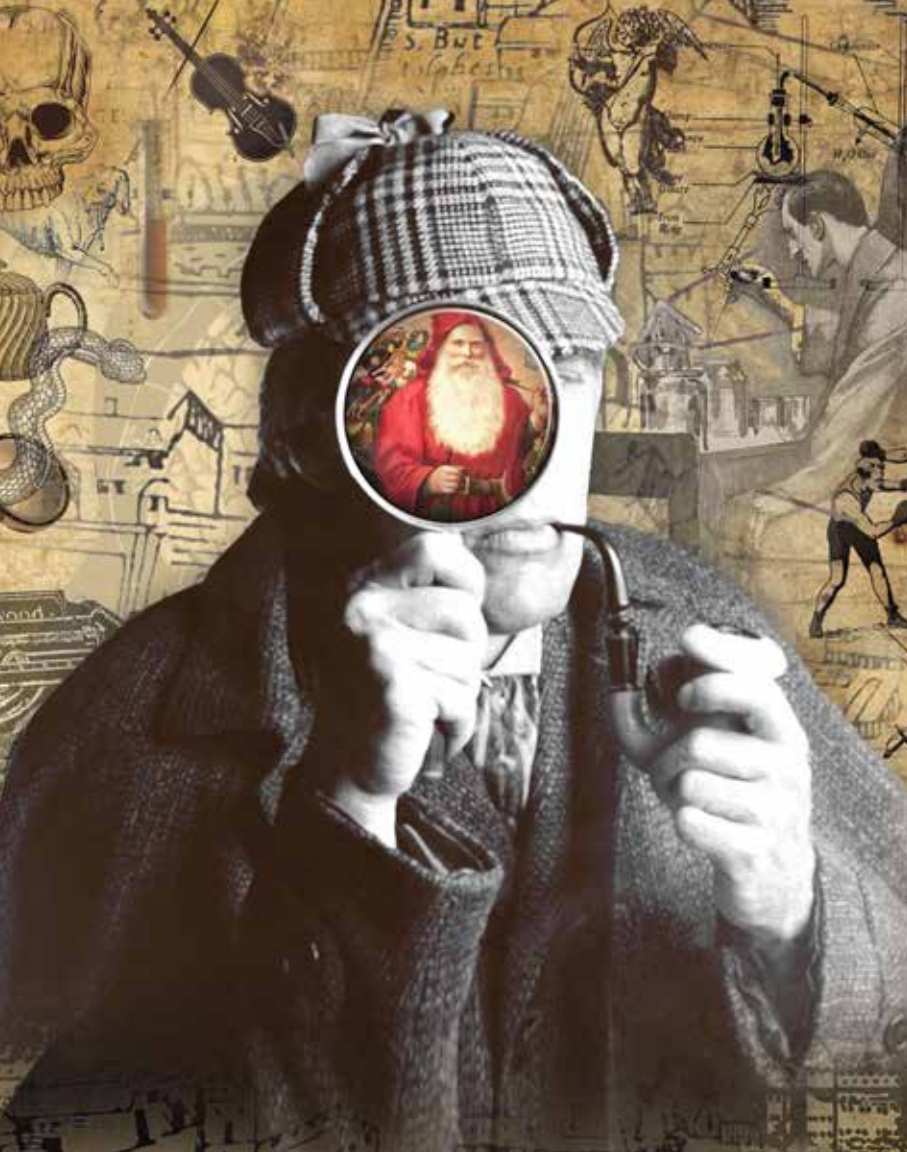
## FLEX PASS SUBSCRIPTION

Choose either 4 or 7 shows, and mix and match between musicals and plays, between The State Theatre and The Washington Center. You're in control, but your seating is based on availability.

## Q-PASS

Prefer to make your own plans? The Q-Pass allows you same-day entrance to 3 shows on the season, at prices lower than even rush ticket pricing. The catch? This pass is reserved for patrons aged 20 - 39.

Compare Subscription Types	9 Play Subscription	7 Play Subscription	7 Play Flex Pass	4 Play Flex Pass	Q Pass
Keep your seats from the previous season	Yes	Yes	No	No	No
Priority advance seating	Yes	Yes	No	No	No
Free exchanges & reprints	Yes	Yes	Yes	Yes	No
Half-price repeat tickets	Yes	Yes	Yes	Yes	No
See the whole season	Yes	No	No	No	No
Pick and choose plays	No	No	Yes	Yes	Yes
Flexible scheduling	No	No	Yes	Yes	Yes
Pay the lowest price	No	No	No	No	Yes



**SEATTLE AUTHOR**

# SHERLOCK HOLMES AND THE CASE OF THE CHRISTMAS CAROL

by John Longenbaugh

**THE STATE THEATRE**

PREVIEWS: November 27

RUNS: November 29 - December 31, 2019

Presumed dead for three years, a hardened Sherlock Holmes resurfaces, turning his back on the people who need him most. After an ominous warning from his nemesis Professor Moriarty, three unexpected callers arrive on Christmas Eve uncovering clues from the detective's past, present and future. Can they save Holmes and his world from a dire end? Seattle playwright John Longenbaugh deftly steers us through this magical holiday mystery, one clue at a time.

Artist: John Serembe

# A CHRISTMAS CAROL

by Charles Dickens,  
adapted for the stage by Aaron Lamb

## THE STATE THEATRE

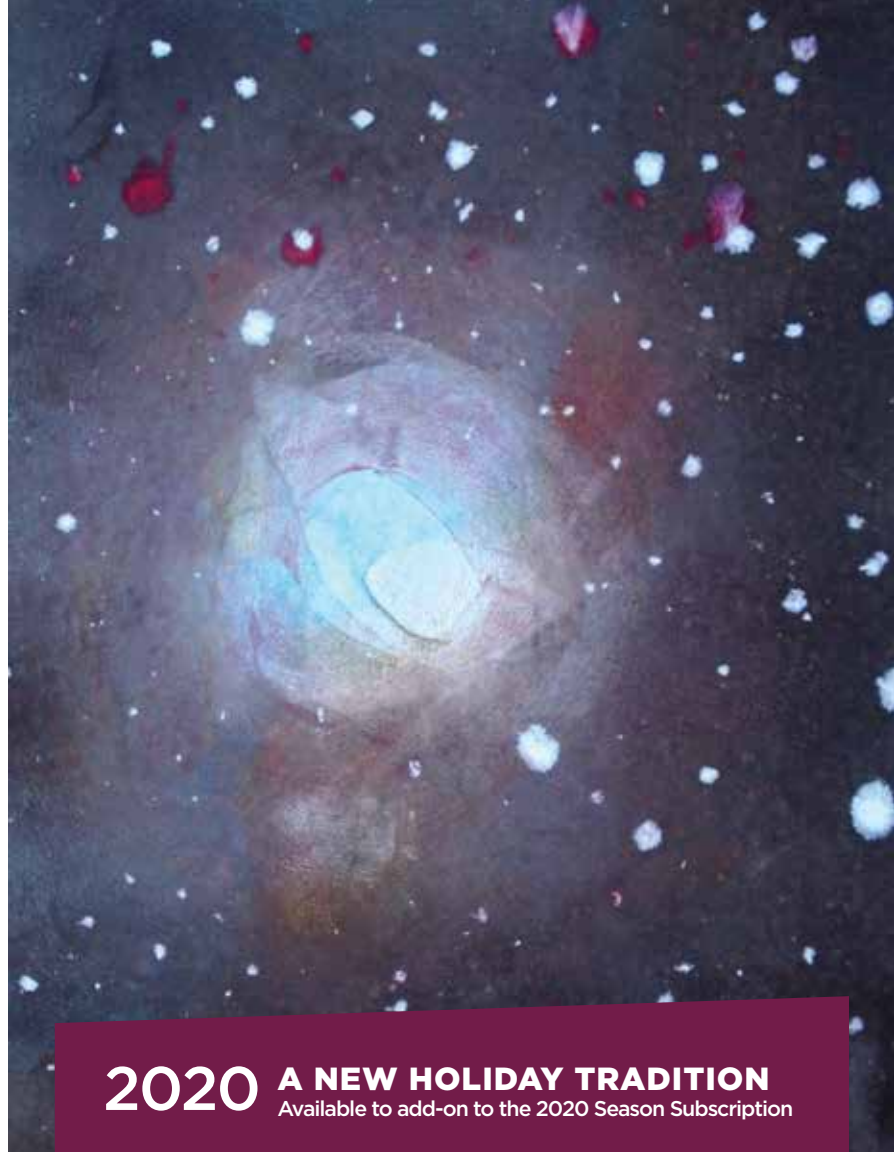
PREVIEWS: November 25

PLAYS: November 27 - December 31, 2020

🎵 PLAY WITH MUSIC

Hailed as the greatest ghost story ever told, we begin a new holiday tradition at Harlequin with Artistic Director Aaron Lamb's fresh adaptation of Charles Dickens' classic story of transformation, absolution, and grace. Join us for a holiday classic that's sure to please, with a healthy dose of holiday cheer, plenty of carols and music, and the kind of ghostly special effects that only Harlequin can deliver. We will transform the State Theatre to a theatre-in-the-round, bringing Bob Cratchit, Tiny Tim, and all your favorite holiday characters center stage for an experience not to be missed. Grab the family, order a hot-buttered-rum, and join us for true holiday spirit.

Artist: Lois Beck



**2020 A NEW HOLIDAY TRADITION**  
Available to add-on to the 2020 Season Subscription



## MEMBER BENEFITS

**Include a tax-deductible donation with your subscription** and help Harlequin tell stories of redemption and transformation for years to come. As a thank you, you'll receive the following exciting benefits. In addition, become a **Monthly Sustaining Member** and receive \$1 off beer and \$2 off wine for the year. Monthly Sustaining Members at the Artists' Circle level and above also receive a \$15 concessions card. For full benefit descriptions, please view our website at [harlequinproductions.org/membership](http://harlequinproductions.org/membership)

	Friend (\$30)	Supporter (\$75)	Partner (\$150)	Investor (\$300 / \$25 mo.)	Benefactor (\$600 / \$50 mo.)	Artist's Circle (\$1200 / \$100 mo.)	Producer's Circle (\$3000 / \$250 mo.)	Artistic Director's Circle (\$5000 / \$420 mo.)
Recognition of your gift on the website	✓	✓	✓	✓	✓	✓	✓	✓
Tax deductible* (see below)	✓	✓	✓	✓	✓	✓	✓	✓
10% discount on merchandise	✓	✓	✓	✓	✓	✓	✓	✓
10% discount on single tickets	✓	✓	✓	✓	✓	✓	✓	✓
Recognition of your gift in all show programs		✓	✓	✓	✓	✓	✓	✓
15% discount on single tickets for fall member value season		✓	✓	✓	✓	✓	✓	✓
Invite for 2 to the Season Announcement Party			✓	✓	✓	✓	✓	✓
Bring a friend ticket voucher			✓	✓	✓	✓	✓	✓
Invite for 2 to attend a Technical Dress Rehearsal				✓	✓	✓	✓	✓
25% discount on single tickets for fall member value season				✓	✓	✓	✓	✓
Invite for 2 to a Backstage Tour					✓	✓	✓	✓
Two complimentary tickets to any performance					✓	✓	✓	✓
Invite for 2 to Uncorked					✓	✓	✓	✓
Invite for 2 to production meet and greets						✓	✓	✓
Invite for 2 to Miscast						✓	✓	✓
Invite for 2 to the Stage Manager's Experience							✓	✓
Invite for 2 to the Artist Director's Cabaret								✓

*\*Benefits are cumulative; tax deductibility is reduced by the fair market value of the benefits received.*

## 2020 SUBSCRIBER INFO

Name \_\_\_\_\_

Street \_\_\_\_\_

City \_\_\_\_\_ State \_\_\_\_\_ Zip \_\_\_\_\_

Phone (Day) \_\_\_\_\_ (Eve) \_\_\_\_\_

Email \_\_\_\_\_

☐ Sign up for our 'e-News' Email Newsletter to keep up to date.

## RENEWING SUBSCRIBERS

RENEWING subscribers, your priority deadline is FRIDAY, JULY 19.

☐ I would like the same subscription seats as last season, if available.

☐ Please change my subscription type/day/week/seats as indicated.

## CHOOSE YOUR SUBSCRIPTION WEEK

☐ 1      ☐ 2      ☐ 3      ☐ 4

## CHOOSE YOUR PERFORMANCE DAY

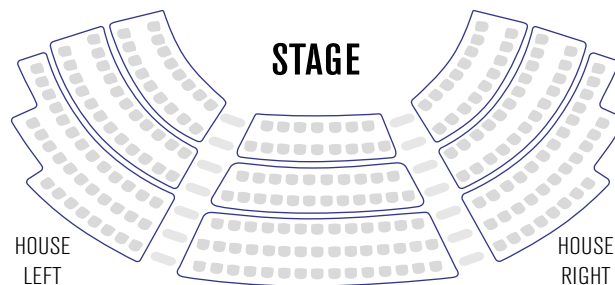
☐ THURS 7:30\*    ☐ FRI 7:30    ☐ SAT 2:00    ☐ SAT 7:30    ☐ SUN 2:00+

\*Weeks 2, 3, 4 only (except renewing First Thursday subscribers)

† Weeks 1, 2, 3 only

## SEATING PREFERENCE

Please number the sections below in order of your preferred seating.



☐ No front row please    ☐ Prefer aisle seats

☐ Special seating needs: \_\_\_\_\_

\_\_\_\_\_  
\_\_\_\_\_

For box office use only: BP \_\_\_\_\_ / \_\_\_\_\_ L D P S Initials \_\_\_\_\_

## CHOOSE YOUR TICKETS

### SEASON SUBSCRIPTION (25% SAVINGS)

Choose from the full season of 9 plays, or select all 7 on the State Theatre stage.

#### General

9 Show: \$264 x \_\_\_\_\_ = \$ \_\_\_\_\_

7 Show: \$210 x \_\_\_\_\_ = \$ \_\_\_\_\_

#### Senior/Military

9 Show: \$245 x \_\_\_\_\_ = \$ \_\_\_\_\_

7 Show: \$194 x \_\_\_\_\_ = \$ \_\_\_\_\_

#### Students

(and Youth 25 or under)

9 Show: \$143 x \_\_\_\_\_ = \$ \_\_\_\_\_

7 Show: \$113 x \_\_\_\_\_ = \$ \_\_\_\_\_

### FLEX SUBSCRIPTION (15% SAVINGS)

4 or 7 shows redeemable as your schedule allows

#### 7-Show Flex

\$233 x \_\_\_\_\_ = \$ \_\_\_\_\_

#### 4-Show Flex

\$133 x \_\_\_\_\_ = \$ \_\_\_\_\_

#### 3-Show Q-Pass (For ages 20-39)

\$40 x \_\_\_\_\_ = \$ \_\_\_\_\_

### CHRISTMAS CAROL

Add tickets with your subscription and get a 25% discount.

#### General

\$55 - 25% = \$41.25 x \_\_\_\_\_ = \$ \_\_\_\_\_

#### Senior/Military

\$50 - 25% = \$37.50 x \_\_\_\_\_ = \$ \_\_\_\_\_

#### Students

(And Youth 25 or under)

\$30 - 25% = \$22.50 x \_\_\_\_\_ = \$ \_\_\_\_\_

### ADD A MEMBERSHIP

Unlock exclusive membership benefits and support Harlequin year-round by adding a tax-deductible membership to your order: \_\_\_\_\_

Or Add a monthly **Sustained Membership**  
(Do not include this amount in the order total) \_\_\_\_\_/mo.

**TOTAL**

## PAYMENT METHOD

☐ I would like to make  
10 monthly payments

The box office will contact you to confirm details.

Available for 9-show, 7-show, and 7-Show Flex subscriptions only.

Includes a \$2/month processing fee.

☐ Please find my check enclosed  
Made out to Harlequin Productions

Please charge my:

☐ Visa ☐ Mastercard

☐ AMEX ☐ Discover

Cardholder Name

Card Number

Security Code (on back)

Expiration

Signature

**HARLEQUIN**



# HARLEQUIN

State Theatre, • 202 4th Avenue East  
Olympia, WA 98501

Presorted  
First-Class Mail  
U.S. Postage Paid

