

SWEENEY TODD

The Demon Barber of Fleet Street
A Musical Thriller

Music and Lyrics by STEPHEN SONDHEIM

Book by HUGH WHEELER

From an Adaptation by CHRISTOPHER BOND

Originally Directed On Broadway by HAROLD PRINCE

Orchestrations by Jonathan Tunick



October 11 - 13, 2024

HARLEQUIN



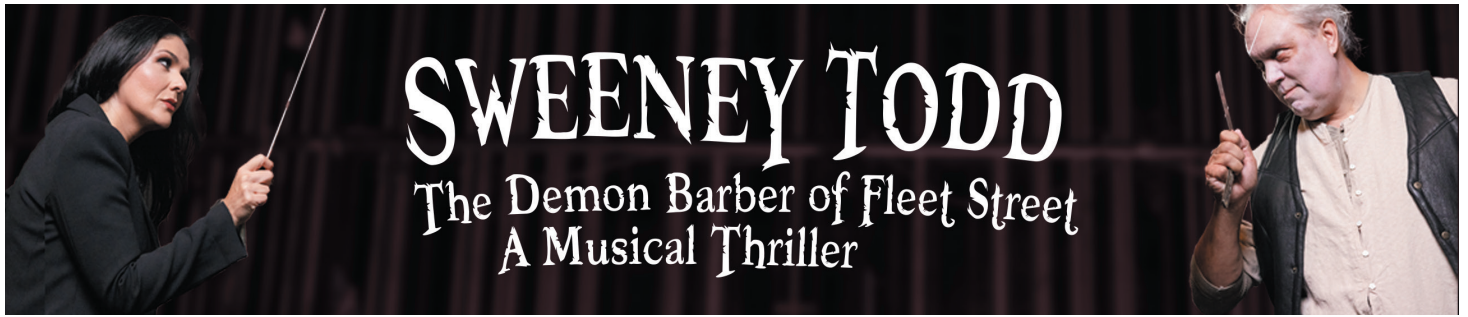


Photo by Shanna Paxton Photography

SWEENEY TODD

The Demon Barber of Fleet Street

A Musical Thriller

Music and Lyrics by
STEPHEN SONDHEIM

Book by
HUGH WHEELER

From an Adaptation by **CHRISTOPHER BOND**

Originally Directed On Broadway by **HAROLD PRINCE**

Orchestrations by **Jonathan Tunick**

Originally Produced on Broadway by Richard Barr, Charles Woodward, Robert Fryer, Mary Lea Johnson, Martin Richards in Association with Dean and Judy Manos

CAST

Sweeney ToddEric Polani Jensen*
Mrs. Lovett.....Justine Cameron
JohannaJulia Kuzmich
Anthony Hope.....Noah Fletcher
Judge TurpinJeff Church
Beadle Bamford..... Max Lopuszynski
Tobias Ragg Nick Hall
Adolfo Pirelli..... Jerod Nace
Beggar Woman..... Jana Tyrrell
Child Ami "AJ" Matthews

ENSEMBLE

Soprano, Dance & Fight Captain Mariesa Genzale
Soprano Juliette Jones
Mezzo Jill Barnes
MezzoHeather Matthews
TenorBruce Haasl
Tenor/Baritone..... Ben Matthews
Baritone.....Travis Tingvall
Bass..... Xander Layden

**Special Thanks to: Tacoma Arts Live,
Marianna de Fazio, Jamie Terry,
Anna Bobcova and Kinetic Factor.**

CREATIVE TEAM

Director Aaron Lamb
Conductor.....Alexandra Arrieche
Masterworks Artistic Director Ben Luedcke
Vocal Director/Rehearsal Pianist Stephanie Layton
Fight and Intimacy Director Candace James
Scenic Design Jeannie Beirne
Costume Design Darren Mills
Wig, Hair and Makeup Design..... Darren Mills
Lighting Design Mark Thomason
Sound Design Keith Jewell
Properties Design..... Jordanna Averett
Masterworks Accompanist Angi Swan

PRODUCTION TEAM

Stage Manager..... Gina Salerno
Assistant Stage Manager Perseus "Percy" Wait
Backstage Hand..... Tommy McGee
Master Electrician Rob Taylor
Wardrobe Manager Darren Mills

RUN TIME

2 hours and 45 minutes with one 20 minute intermission

PLACE

19th-century London

*Appearing through an Agreement between this theatre, Harlequin Productions, and Actors' Equity Association, the Union of Professional Actors and Stage Managers in the United States.

Sweeney Todd
Is presented through special arrangement with Music Theatre International (MTI).
All authorized performance materials are also supplied by MTI.
www.mtishows.com

ANY VIDEO AND/OR AUDIO RECORDING OF THIS PRODUCTION IS STRICTLY PROHIBITED.

SWEENEY TODD THE DEMON BARBER OF FLEET STREET

OLYMPIA SYMPHONY MUSICIANS

VIOLIN 1

Karin Choo +
Ben Wedeking ++
Mary Beth Harrison
Katherine Sartori

VIOLIN 2

Martin Dimitrov *
Kendalia Spencer **
Lisa Pearson

VIOLA

Hallie Johnston *
Austin Schlichting **

CELLO

Holly Reeves *
Calvin Hettinger **

BASS

Tommy Hawthorne *

FLUTE

Cheryl Sears *
Mando Surita

OBOE

Laura Goben Harper *

CLARINET

Ashley Cook *
Cindy Renander

BASSOON

Brian Geddes *

HORN

Larry Vevig *

TRUMPET

Scott Meredith *
Patrick Harvey

TROMBONE

Ryan Whitehead *
Logan Borchard
Wade Demmert

TIMPANI

Randy Grostick *

PERCUSSION

Aaron Julyan *
Ian McKain-Pitts

Elizabeth Landis, Harp
Dan Colgan, Organ
Jennifer Hermann, Keyboard

MASTERWORKS CHORAL ENSEMBLE

Jessica Barnes, Soprano
Nicole Butigan, Soprano
Julie Moffat, Soprano
Valerie Bell, Alto
Connie Groven, Alto
Anne Swan, Alto
Mo Gradinaru, Tenor
Stephen Mazepa, Tenor
Victoria Montrose, Tenor
Dan Rubin, Bass
Jeremy Zwiefel, Bass

+ Concertmaster ++ Associate Concertmaster
* Principal ** Assistant Principal

A huge thank you to our Harlequin and Olympia Symphony Orchestra Season Sponsors:





Supporting the Arts Locally for more than 20 years

www.parcfoundation.org
info@parcfoundation.org

360-352-0980

MUSICAL NUMBERS

ACT I

“The Ballad of Sweeney Todd”Company
 “No Place Like London” Anthony, Sweeney Todd,
 Beggar Woman
 “The Barber and His Wife” Sweeney Todd
 “The Worst Pies in London”Mrs. Lovett
 “Poor Thing”Mrs. Lovett
 “My Friends”Sweeney Todd, Mrs. Lovett
 “Green Finch and Linnet Bird”Johanna
 “Ah, Miss”Anthony, Johanna, Beggar Woman
 “Johanna”Anthony
 “Pirelli’s Miracle Elixir”Tobias, Sweeney Todd,
 Mrs. Lovett, Company
 “The Contest” Adolfo Pirelli
 “Johanna”Judge Turpin
 “Wait”Mrs. Lovett
 “Kiss Me” Johanna, Anthony
 “Ladies in Their Sensitivities”Beadle
 “Quartet” Johanna, Anthony, Judge Turpin, Beadle
 “Pretty Women”Sweeney Todd, Judge Turpin
 “Epiphany” Sweeney Todd
 “A Little Priest” Sweeney Todd, Mrs. Lovett

ACT II

“God, That’s Good”Tobias, Mrs. Lovett,
 Sweeney Todd, Beggar Woman, Company
 “Johanna”Anthony, Sweeney Todd,
 Johanna, Beggar Woman
 “By the Sea”Mrs. Lovett, Sweeney Todd
 “The Letter” Ensemble
 “Not While I’m Around”Tobias, Mrs. Lovett
 “Parlor Songs” Beadle, Tobias, Mrs. Lovett
 “City on Fire” Company
 “Final Sequence” Company
 “The Ballad of Sweeney Todd” Company

READY FOR A KILLER DEAL?



Bring your SWEENEY TODD ticket stub
 to Delmonico's Heritage Butcher Shop
 and slice **10% off**
 your next purchase!
delmonicomeats.com



Make resilience your model.

Our professional financial planners have helped all kinds of business owners get over hurdles. See how our experience can help you do the same.

Navigate Financial
 360.628.8175
yourjourney@navigatefinancialnw.com
www.navigatefinancialnw.com
 3663 College St SE Suite B
 Lacey, WA 98503



Securities and advisory services offered through Commonwealth Financial Network®, Member FINRA/SIPC, a Registered Investment Adviser. Financial planning services offered by Navigate Financial, a WA Registered Investment Adviser, are separate and unrelated to Commonwealth. Fixed insurance products and services are separate from and not offered through Commonwealth Financial Network®.

HARLEQUIN 2025

HarlequinProductions.org
360-786-0151



Ms. HOLMES & Ms. WATSON
-APT. 2B BY KATE HAMILL
January 24 - February 9

██████████ IS THIS ██████████ A ROOM
Conceived & Originally Directed by Tina Satter
March 7 - 23

R&J
by William Shakespeare
Adapted by Aaron Lamb
April 25 - May 18

RENT
book, music, and lyrics by Jonathan Larson
June 20 - July 20

POTUS
(Or Behind Every Great Dumbass Are Seven Women Trying to Keep Him Alive)
by Selina Fillinger
August 22 - Sept. 7

MURDER ON THE ORIENT EXPRESS
By Agatha Christie
Adapted for the stage by Jen Ludwig
October 3 - 26

A Christmas Carol
by Charles Dickens
adapted for the stage by Aaron Lamb
November 28 - December 24

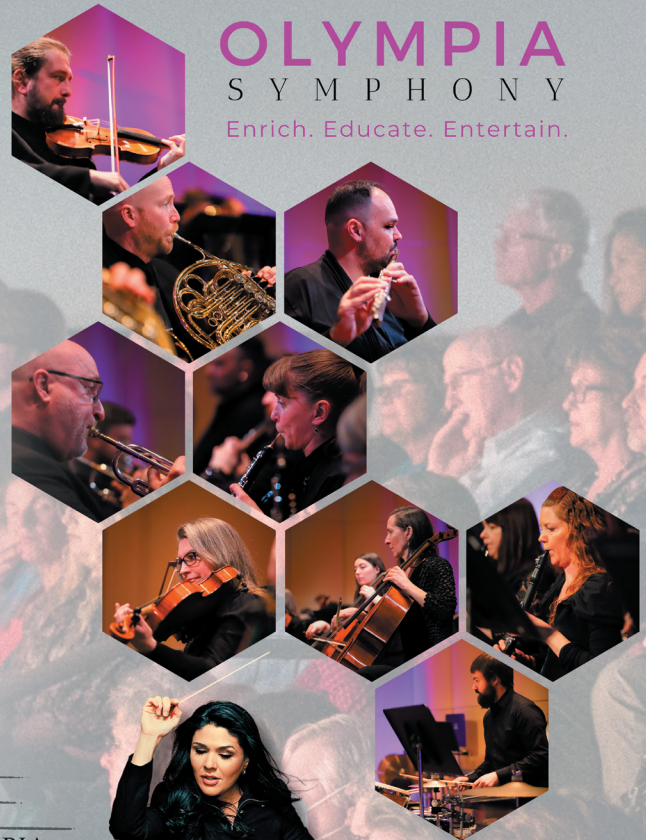
2024-2025 CONCERTS

This season is a kaleidoscope of all the ways music touches our lives and engages us, while fostering joy, creativity, and connection.

- OCT 11-13 SWEENEY TODD**
F-SA 7:30 PM *Co-produced with Harlequin Productions,*
SU 2:00 PM *featuring members of Masterworks Chorale*
- NOV 17 ORCHESTRA GAMES**
3 PM *Family Concert*
- DEC 31 EPIC MOVIE MUSIC BATTLES**
7:30 PM *New Year's Eve Concert*
- FEB 8 BEETHOVEN VS GULDA**
3:00 PM *Featuring Nathan Chan, cello*
- MAR 16 OPEN DOORS**
3:00 PM *Featuring 2024 Young Artist Competition Winners
Lin Tokura, violin, and Khaos Kook, violin*
- APR 19 NEW FRONTIERS**
7:30 PM *Featuring Petrit Çeku, guitar*

OLYMPIA SYMPHONY

Enrich. Educate. Entertain.



SCAN | VISIT | CALL
OLYMPIASYMPHONY.ORG
360-753-0074



ALEXANDRA ARRIÈCHE
MUSIC DIRECTOR & CONDUCTOR

DIRECTOR & CONDUCTOR'S NOTES

George Cruikshank's "The British Beehive" (the cartoon on the drop hanging in front of you) was drawn in 1840, and first printed in 1867. This somewhat dystopian illustration of British society depicts people as workers in a hive, their positions immutable, in service to their queen. Around the same time (the winter of 1846-47) a penny dreadful called "The String of Pearls" was published, featuring a villainous barber by the name of Sweeney Todd. Before the weekly publication had revealed the ending, plays featuring the barber were already being written. By the 1870s, Sweeney Todd was a familiar character to most Victorians.

The Olympia Symphony is thrilled to kick off the season with our first-ever collaboration with Olympia's beloved Harlequin Productions.

Sweeney Todd The Demon Barber of Fleet Street was chosen for its captivating story and extraordinary musical score. The music plays a pivotal role in conveying the show's dark and tragic themes, with the opening number, "The Ballad of Sweeney Todd," not only be-

In our version, which premiered on Broadway in 1979, Sweeney's immutable position in the British hive leaves him no other opportunity for mobility than unspeakable violence. In fact, no one in the story shows any sense of moral redeemability. Sure, the youngest are the most innocent, but faced with their own social immobility all bets are off. Revenge becomes the original and most gruesome form of cancel culture, and it demonstrates its own sheer futility. As Todd says, "The history of the world, my sweet, is who gets eaten and who gets to eat."

It's also, of course, devilishly fun. I hope you enjoy it.

– **Aaron Lamb**, Director

ing the most famous theme but also setting the tone for the entire production as it introduces us to the infamous Sweeney Todd himself.

Prepare for an exhilarating journey through Sondheim's dark and enchanting world!

– **Alexandra Arrieche**, Conductor

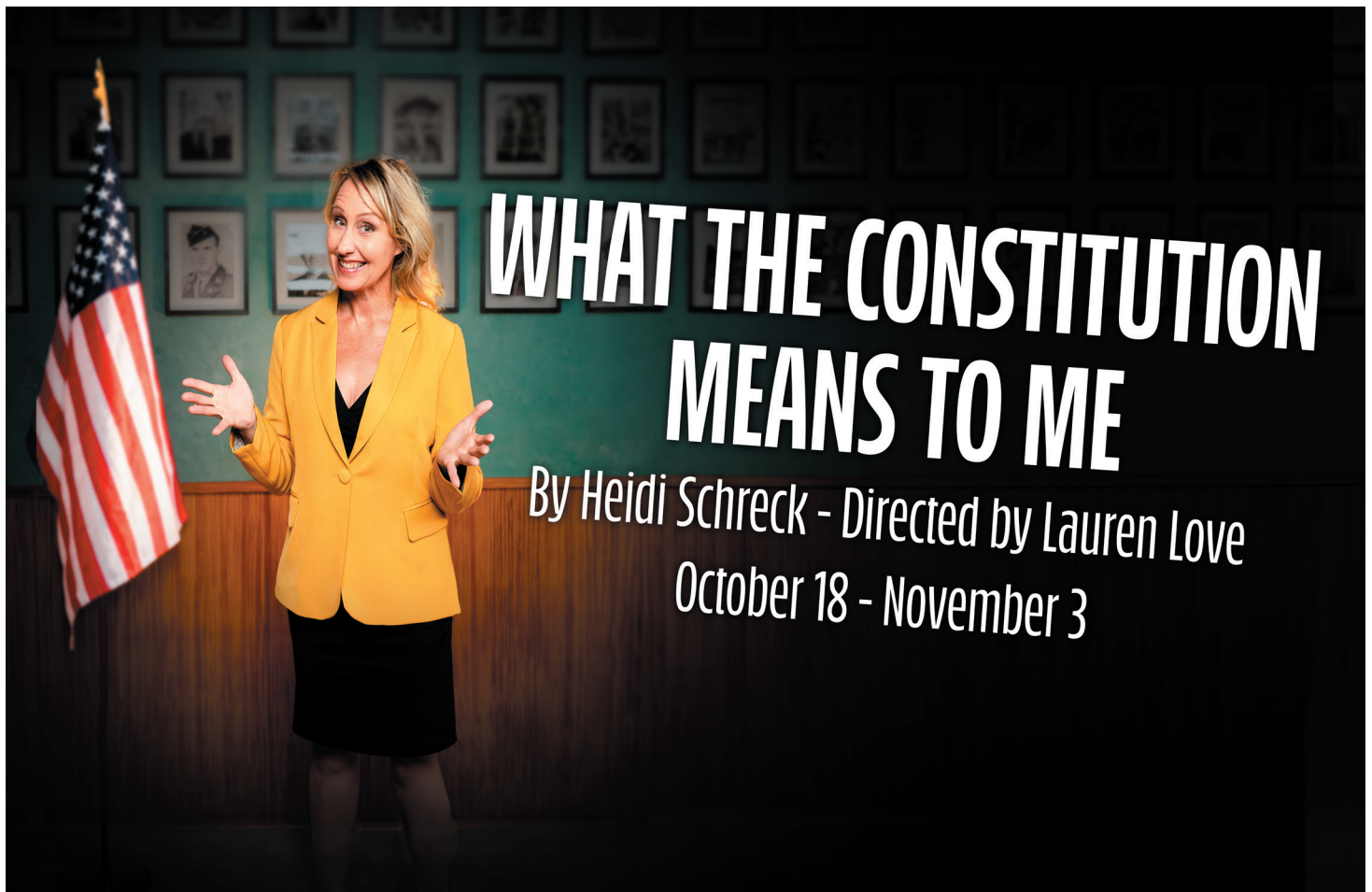


Photo by Shanna Paxton Photography

OLY ARTS



Art • Music • Dance & more!

**Want to know
what's going on
in the arts?**

We're online 24/7 at:

OLYARTS.COM



olyarts



olympiaartsnews

Post your arts event for free in our **CALENDAR**

Want new stories delivered?

Kept private - No spam

Subscribe!



**Help our mission to serve the South Sound.
Consider **donating** - we are a 501c (3) non-profit**

Advertise with us! Contact john@olyarts.com

STEPHEN SONDHEIM - MUSIC AND LYRICS



Stephen Sondheim (1930-2021) wrote the music and lyrics for *Saturday Night* (1954), *A Funny Thing Happened On The Way To The Forum* (1962), *Anyone Can Whistle* (1964), *Company* (1970), *Follies* (1971), *A Little Night Music* (1973), *The Frogs* (1974), *Pacific Overtures*

(1976), *Sweeney Todd* (1979), *Merrily We Roll Along* (1981), *Sunday In The Park With George* (1984), *Into The Woods* (1987), *Assassins* (1991), *Passion* (1994), *Road Show* (2008) and *HERE WE ARE* (2023), as well as the lyrics for *West Side Story* (1957), *Gypsy* (1959), *Do I Hear A Waltz?* (1965) and additional lyrics for *Candide* (1973). *Side By Side By Sondheim* (1976), *Marry Me A Little* (1981), *You're Gonna Love Tomorrow* (1983), *Putting It Together* (1993/99), *Moving On* (2001), *Sondheim On Sondheim* (2010) and *Old Friends* (2023) are anthologies of his work as composer and lyricist. For films, he composed the scores of *Stavisky* (1974), co-composed the score for *Reds* (1981), and wrote songs for *Dick Tracy* (1990). He wrote songs for the television production *Evening Primrose* (1966), co-authored the film *The Last of Sheila* (1973) and the play *Getting Away With Murder* (1996) and provided incidental music for the plays *The Girls of Summer* (1956), *Invitation To A March* (1961), *Twigs* (1971) and *The Enclave* (1973).

He won the Tony Award for Best Score for *Company*, *Follies*, *A Little Night Music*, *Sweeney Todd*, *Into the Woods*, and *Passion*, all of which won the New York Drama Critics' Circle Award, as did *Pacific Overtures* and *Sunday In The Park With George*, the latter also receiving the Pulitzer Prize for Drama (1985).

Stephen Sondheim was born and raised in New York City. He graduated from Williams College, winning the Hutchinson Prize for Music Composition, after which he studied theory and composition with Milton Babbitt. He served on the Council of the Dramatists Guild, the national association of playwrights, composers and lyricists, and served as its president from 1973 to 1981. In 1983 he was elected to the American Academy of Arts and Letters and in 1990 was appointed the first Visiting Professor of Contemporary Theatre at Oxford University. He was awarded the Kennedy Center Honors in 1993, the National Medal of Arts in 1996, the MacDowell Medal in 2013 and the Presidential Medal of Freedom in 2015. His collected lyrics with attendant essays have been published in two volumes: *Finishing the Hat* (2010) and *Look, I Made a Hat* (2011).

In 2010 the Broadway theater formerly known as Henry Miller's Theatre was renamed in his honor, and in 2019 he became the first living artist to have a theatre named in his honor on Shaftesbury Avenue when the refurbished Queen's Theatre in London's West End was renamed the Sondheim Theatre to commemorate his 90th birthday, by Sir Cameron Mackintosh.

HUGH WHEELER - BOOK



Hugh Wheeler was a novelist, playwright and screen writer. He wrote more than thirty mystery novels under the pseudonyms Q. Patrick and Patrick Quentin, and four of his novels were transformed into films: *Black Widow*, *Man in the Net*, *The Green-Eyed Monster*

and *The Man with Two Wives*. For films he wrote the screenplays for *Travels with My Aunt*, *Something for Everyone*, *A Little Night Music*, and *Nijinsky*. His plays include *Big Fish*, *Little Fish* (1961), *Look: We've Come Through* (1961) and *We Have Always Lived in the Castle* (1966, adapted from the Shirley Jackson novel), he co-authored with Joseph Stein the book for a new

production of the 1919 musical *Irene* (1973), wrote the books for *A Little Night Music* (1973), a new production of *Candide* (1973), *Sweeney Todd, the Demon Barber of Fleet Street* (1979, based on a version of the play by Christopher Bond), and *Meet Me in St. Louis* (adapted from the 1949 M-G-M musical), contributed additional material for the musical *Pacific Overtures* (1976), and wrote a new adaptation of the Kurt Weill opera *Silverlake*, which was directed by Harold Prince at the New York Opera. He received Tony and Drama Desk Awards for *A Little Night Music*, *Candide* and *Sweeney Todd*. Prior to his death in 1987 Mr. Wheeler was working on two new musicals, *Bodo* and *Fu Man-chu*, and a new adaptation of *The Merry Widow*.

SWEENEY TODD THE DEMON BARBER OF FLEET STREET

CAST



Eric Polani Jensen* (he/him)
- *Sweeney Todd*

Eric is excited to be part of this production. This is his first show with Harlequin. He's been involved in the Pacific Northwest Theatre community for over 30 years, performing at 5th Avenue, ACT, Seattle Rep, Seattle Children's Theatre, Taproot

Theatre, and Village Theatre. Thank you for supporting live theatre.



Justine Cameron (she/her)
- *Mrs. Lovett*

Justine is delighted to be making both her Harlequin and West Coast debuts in this killer production! Select Regional credits include Fantine in *Les Misérables* (Uptown Music Theatre); Katherine in *Newsies* (Paramount Theatre); Sister Mary

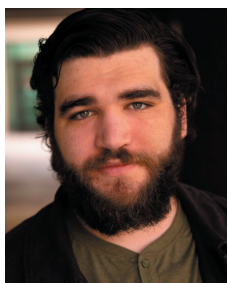
Robert in *Sister Act* (Metropolis Performing Arts Centre); Beth in *Merrily We Roll Along* (Blank Theatre Company). Justine is currently based in Chicago, though she originally hails from the beautiful city of Seattle. It's good to be home! BFA Musical Theatre, Chicago College of Performing Arts at Roosevelt University. Represented by BMG Talent. Love to her family. "Immensely, intensely, absolutely." Instagram: @justinekc | justinecameron.com



Julia Kuzmich (she/her)
- *Johanna*

Julia is pinching herself to be playing this unhinged ingenue. Since graduating from Ohio University, she has worked with The Utah Shakespeare Festival, Seattle Public Theatre, Village Theatre, Seattle Rep, and Milwaukee Rep. Her favorite

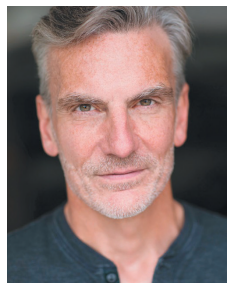
roles include Natasha in *The Great Comet of 1812*, Rose in *Titanish*, Dogberry in *Much Ado About Nothing*, Liesl in *The Sound of Music* and Luisa in *The Fantasticks*. Instagram: @julia.kuzmich. Love to the fambam and Micah for their support.



Noah Fletcher (he/him)
- *Anthony Hope*

Noah is excited to make his debut with Harlequin! He was most recently seen in *Miss Holmes* with Latitude Theatre, *Sunset Boulevard* with Showtunes Theatre, *Stranger Things: The Experience* in Seattle, and touring around the greater

Seattle area in *The Innkeepers Christmas* with Taproot Theatre. Noah received his BFA in Screen Acting with a minor in Musical Theatre at Chapman University and is currently getting his MBA in Sport and Entertainment Management at Seattle University. When he isn't acting, he is usually playing ball with his dog, Rover. He hopes you enjoy the show!



Jeff Church (he/him)
- *Judge Turpin*

Jeff is thrilled to be part of this cast, singing this role and watching a dear friend "killin' it"...and with a full orchestra. Life is good. Recent work includes *Sunset Boulevard* (Max) with Showtunes Theatre, *The Hello Girls* (General Pershing) at Taproot Theatre, and set design/construction of

110 in the Shade for Reboot Theatre/Seattle Public Theatre. He has been on stage at Village Theatre, Artswest, Seattle Musical Theatre, Seattle Gilbert and Sullivan Society and Secondstory Rep. Thank you to my friends who lift me up and Navi who keeps me grounded.



Max Lopuszynski (he/him)
- *Beadle Bamford*

Max is elated to make his Harlequin and Olympia debuts with this dream-come-true production! Recent credits include Cabaret (Ernst) with Bainbridge Performing Arts, Anyone Can Whistle (Magruder) with Reboot Theatre Company, Sunday in the Park

with George (Franz/Dennis) with SecondStory Repertory, and The Pirates of Penzance (u/s Frederic) with the Seattle Gilbert & Sullivan Society. He's also performed throughout the PNW with Drama Dock, Last Leaf Children's Theatre, Seattle Musical Theatre, Tacoma Musical Playhouse, and Vashon Opera among others. Up next: The Three Musketeers at Icicle Creek Center for the Arts. IG: @Max-Lopuszynski.



Nick Hall (he/him)
- *Tobias Ragg*

Nick is very excited to be performing in his fifth production with Harlequin! You may have seen him in the *Cabaret* orchestra, the "teeny tiny" *Falsettos* band, as Doctor Watson in *Ken Ludwig's Baskerville* in 2023, or as Sancho Panza in *Man*

of La Mancha in 2019. He has also worked backstage, as Assistant Stage Manager for *A Christmas Carol* and as a stagehand for *Fun Home*. Outside of Harlequin, he played Luke/Ares in Olympia Family Theatre's *The Lightning Thief* (2023). Nick is also known regionally as the jazz band leader at Pope John Paul II High School and for being the drama director for Black Hills High School. Go eagles and wolves!

SWEENEY TODD THE DEMON BARBER OF FLEET STREET

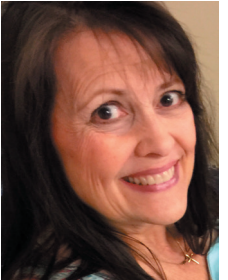
CAST Continued



Jerod Nace (he/him)
- *Adolfo Pirelli*

Jerod is returning after a decade away from the theater but he's pretty sure he remembers how to do it. No better way to dust off vocal chords than a Sondheim score as magnificent as *Sweeney Todd* and a singing role as fun and chal-

lenging as Pirelli. Olympia audiences last saw Jerod performing a Queen tribute with his band, Mercury Rising, for a sold-out show at the Washington Center in 2023. Mercury Rising will return to the Washington Center on March 29, 2025 for an encore performance. Gratitude to his children Dutch, Virginia, and Cohen for loving him unconditionally. www.mercuryrisingolympia.com.



Jana Tyrrell (she/her)
- *Beggar Woman*

Jana is thrilled to be back in a Harlequin production, having most recently appeared as Mr. Bennet/Charlotte Lucas in *Pride and Prejudice*. She is an Indiana native and a Purdue University theatre graduate. In addition to acting credits with the Oregon

Shakespeare Festival, Indianapolis Civic Theatre, and The Lyric Theatre, she has performed in multiple shows with Harlequin Productions, including *Deathtrap* (2024), *A Christmas Carol* (2021, 2022), *The Women*, *Long Day's Journey Into Night*, *The Glass Menagerie*, *The Importance of Being Ernest*, *Sylvia*, *A Streetcar Named Desire* and *Assassins*, to name a few. She was seen in Centralia College productions of *Once On This Island*, *Into the Woods*, *Pippin*, and *Third*, among others, and in *Next to Normal* and *Little Women* at Capital Playhouse. MLTYK to Brian, Megan, Jake, Melissa, Avery, and Grayson.



Ami "AJ" Matthews (they/them)
- *Child*

Ami is excited to be in their second Harlequin production! They most recently appeared as "Boy" in *A Christmas Carol* (2023), "Rooster" in PNW Theater's production of *Annie, Jr.*, and King Louie in CTE's *Jungle Book Jr.* You will also be able to

catch them this spring as "Matilda" at Evergreen Playhouse! Ami is an accomplished visual artist and won a contest to have their art featured at Captain Little at ArtsWalk in 2022. They enjoy cuddling with their dogs, playing the piano, and want to be a graphic designer when they grow up. Ami is stoked to share the stage with their parents and is so excited for their family and friends to come see the show!



Mariesa Genzale - (she/they) - *Ensemble and Dance & Fight Captain*

Mariesa is delighted to be back in a Harlequin production! You may have recently seen her as Lulu/Dance Captain in *Cabaret*. They are a Seattle-based performer and teacher and hold a BFA in musical theatre from Marymount Manhat-

tan College. Other credits include performing with Reboot, Dacha Theatre, Bainbridge Performing Arts & SecondStory Repertory. Much love to their family, friends, and sweet kitten, Hiccup!



Juliette Jones - (she/her)
- *Ensemble*

Juliette is delighted to be making her Harlequin debut in her favorite musical of all time! She has been seen locally with Taproot Theatre, ACT Theatre, Centerstage Theatre, and more. Favorite roles include Hester (*A Woman of No Im-*

portance), Beth (*Little Women*), and Martha (*Spring Awakening*). She also has the pleasure of performing with The Memphis Belles and Singing for Seniors through NM Entertainment. Aside from performing, she has passions for trivia, K-pop, data science, and crosswords. Much love and many thanks to JEMA, Scott, her family, the cast, and crew!



Jill Barnes - (she/her)
- *Ensemble*

Jill is delighted to make her Harlequin debut in *Sweeney Todd* as part of the ensemble. She has previously performed in Bryan Willis' *Hotel Olympian Gala Extravaganza* and is a regular emcee and performer at the *Center*

Salon. Often found singing in her office, car, or home, Jill is excited to perform for an audience that has intentionally opted in. She holds a Master's in Arts Administration from Boston University and a Bachelor of Arts in Vocal Performance from the University of Utah. Jill balances her role as Executive Director of the Washington Center for the Performing Arts with life alongside her husband, three curly-haired kids, and two Great Danes.

SWEENEY TODD THE DEMON BARBER OF FLEET STREET

CAST Continued



Heather Matthews (she/they)
- Ensemble

Heather is delighted to return to the stage! Past Harlequin credits include *The Women*, *Fun Home*, *Hedwig and the Angry Inch*, *Hundred Days*, and *Cabaret*. Other favorite local roles include Alison in *Fun Home* (SPSCC), The Witch

in *Into the Woods* and Diana in *Next to Normal* (Centralia College). Heather also recently made her Musical Director debut heading up Olympia Family Theater's production of *The Lightning Thief*. She enjoys performing with Vox Olympia, Capital City Chorus and her band SpareCrow, teaching music at McKenny Elementary, and playing piano, accordion, guitar, drums, clarinet, sax, and harp. Always up for more musical collabs! Web: www.heathermatthews.com IG: @hedderschmidt_arts



Bruce Haasl (he/him)
- Ensemble

Harlequin audiences may remember Bruce as Ernst Ludwig in *Cabaret* (2024), Mendel in *Falsettos* (2023), the Doctor in *Tenderly*, *The Rosemary Clooney Musical* (2021), the title role in *Jesus Christ Superstar* (2013), Aaron in *First*

Date (2017) or Eddie in the *Stardust* series. He has appeared on many stages around the South Sound including Centerstage, Tacoma Little Theater, and Capital Playhouse. Other favorite roles include Roger in *Rent*, Claude in *Hair*, and Jamie in *The Last Five Years*. Bruce also works behind the curtain as Harlequin's Technical Director, and he has designed and built sets for over 300 productions, including some here at Harlequin. He is very excited to be a part of this incredible show.



Ben Matthews (he/him)
- Ensemble

Ben is debuting with Harlequin and Olympia Symphony Orchestra in this production of *Sweeney Todd*. Previously, Ben was seen as Chiron, in Olympia Family Theater's production of *The Lightning Thief*, as Jules/Greenberg in SP-

SCC's *Sunday in the Park With George*, and as Bruce in SPSCC's *Fun Home*, among other productions. He is absolutely chuffed to be working with Harlequin Productions and OSO.



Travis Tingvall (he/him)
- Ensemble

Travis is thrilled to be back in another Harlequin production, having just played Herman/Max in *Cabaret*. Favorite local credits include Bottom in *A Midsummer Night's Dream* (Tacoma Arts Live), Freddy Benson in *Dirty Rotten*

Scoundrels (Centerstage), Billy in *The Rise and Fall of Little Voice* (ArtsWest), Launce in *Two Gentlemen of Verona* (Renton Civic Theatre), Corny Collins in *Hairspray* (Auburn Community Players), Jerry/Daphne in *Sugar* (Leavenworth Summer Theatre), Mr. Brooke in *Little Women* (Olympia Family Theatre), and Axel in *The Nerd* (Woodinville Repertory Theatre). Travis holds a BFA in Theatre from Pacific Lutheran University. Upcoming: Miss Trunchbull in *Matilda the Musical* (Evergreen Playhouse).



Xander Layden (he/him) - Ensemble

Xander is thrilled to return to a Harlequin production, having played Mr. Darcy in *Pride and Prejudice* and Clifford Anderson in *Death-trap* earlier this season. You may have also seen him in *A Christmas Carol* (2022, 2023), *Baskerville*,

Sherlock Holmes and the Case of the Christmas Carol, *Laughter on the 23rd Floor*, *The Two Gentlemen of Verona*, *Present Laughter*, *The Art of Racing in the Rain*, *The 1940's Radio Hour*, or in the *Stardust* series. More recent shows include *The Mystery Plays* and *The One-Act Play That Goes Wrong* with Theater Artists Olympia, and *Hotel Olympian Gala Extravaganza* with Open Road Productions. Some favorite productions include *Cinder Edna* at Olympia Family Theater, St. Martin's production of *Equivocation*, *Hamlet* with South Puget Sound Community College, *Night Must Fall* at Olympia Family Theater, *The Head That Wouldn't Die!* at Theater Artists Olympia, *The Rocky Horror Show* at Lakewood Playhouse, and *Cabaret* with Standing Room Only.

SWEENEY TODD THE DEMON BARBER OF FLEET STREET

CREATIVE TEAM



Aaron Lamb (he/his)
- Director

Aaron is the Producing Artistic Director of Harlequin Productions. As Artistic Director, he has directed *Cabaret*, *Deathtrap*, *Falsettos*, *Hundred Days*, *A Christmas Carol* (2021, 2022, 2023), *This Flat Earth*, *Hedwig and the Angry Inch*, *The Highest Tide*, *Sherlock Holmes and the Case of the Christmas Carol*, *Man of La Mancha*, *A Doll's House*, *Love and Information*, and *The 1940s Radio Hour*. In eleven seasons as an actor and guest director with Harlequin, he also directed *I Am My Own Wife*, *Three Days of Rain*, *Ruthless!*, *August: Osage County*, *Hedda Gabler*, *Time Stands Still*, *Middletown*, and *Five Women Wearing the Same Dress*. As an actor, he most recently appeared in the 2021-2022 season, as Jacob Marley in *A Christmas Carol*. Lamb has worked in Seattle for Village Theatre, Taproot Theatre, Book-It Repertory Theatre, and Seattle Shakespeare Company, and has worked regionally throughout the country. He holds an MFA in Acting from California State University, Fullerton, a BA from Washington State University, and is a member of the Actor's Equity Association.



Alexandra Arrieche (she/her)
- Conductor

Alexandra is a versatile conductor known for her ability to move seamlessly between classical and pop music. She serves as Music Director of the Olympia Symphony Orchestra, Principal Conductor of the Antwerp Philharmonic, and Music Director of the Henderson Symphony. In 2015, Alexandra's career took off when she was invited to conduct the European Emmy Award-winning *Night of the Proms*, leading to collaborations with pop icons like Steve Lukather, Seal, and Bryan Ferry. She regularly champions new works by composers such as Dobrinka Tabakova and Mason Bates. As a guest conductor, Alexandra has worked with leading orchestras around the world. Her album *Saudade* with the Netherlands Radio Philharmonic won the Edison Prize for Best Jazz Album in 2020. Alexandra also founded a conducting studio in Brazil, which has expanded internationally. She is featured in *The Conductor*, a 2021 documentary about her mentor Marin Alsop, and hosts the popular podcast *Beethoven Was a Rockstar*.



Ben Luedcke (he/him)
- Masterworks Artistic Director

Ben Luedcke conducted his first season with Masterworks Choral Ensemble in 2023-2024 and brings an array of choral and instrumental conducting experience to the group, as well many diverse vocal training techniques. Additionally, Ben is the Minister of Music at Seattle First Baptist Church in downtown Seattle, and the Artistic Director of the Bellevue Chamber Chorus. He is currently finishing his Doctorate of Musical Arts in choral conducting at University of Washington, and he has held teaching positions at UW in the Choral, Musicology, and English departments. In his spare time, Ben is most often hiking with his dog, and otherwise exploring Washington's many amazing trails, trying new craft beers, and bingeing good science fiction.

Stephanie Layton (she/her)
- Vocal Director/Rehearsal Pianist

Stephanie is a multi-instrumentalist who splits time between her hometown of Olympia & (occasionally) NYC, where she spent over a decade living. Recent musician credits include 2023's & 2024's *WTF Cabaret* at Williamstown Theater Festival, *Let's Fall in Love* at Florida Repertory Theater & drums/percussion gadgets for Bill Irwin's clown act at NYC's Irish Arts Center. As a vocalist she has appeared at Joe's Pub, the Rainbow Room & Carnegie Hall (technically; it was a very fancy bat mitzvah gig with her jazz band), and as an accompanist she has played auditions or rehearsals for countless Broadway shows, national tours & regional productions. She grew up a die-hard Capital Playhouse kid and is thrilled to be making her re-entry into the Olympia theater scene with Harlequin and *Sweeney* - her favorite Sondheim musical. edenlanejazz.com

Candace James (she/her)
- Fight and Intimacy Director

For the past fifteen years, Candace has directed and provided fight choreography throughout the Northwest, the Southeast, and internationally in Florence, Italy. Candace is also a professional improv artist, an SAFD-trained combatant, and a playwright. In addition to her freelance work, Candace teaches at Green River College and is the head theatrical director for Children's Dance Theatre. This is Candace's second show with Harlequin Productions, having provided fight and intimacy direction for *Deathtrap* earlier this season. She credits her husband and 8-year-old twin daughters with helping her master the art of chaos coordination.

SWEENEY TODD THE DEMON BARBER OF FLEET STREET

CREATIVE TEAM *Continued*

Jeannie Beirne (she/her) - Resident Scenic Designer

Jeannie has worked with Harlequin since 2014 and is delighted to be returning this season. Past favorites: *Pride and Prejudice*, *Cabaret*, *Falsettos*, *Hundred Days*, *Building Madness*, *Fun Home*, *Hedwig and the Angry Inch*, 2021 Fall Repertory Season including *A Christmas Carol*, *Noises Off*, *Sherlock Holmes and the Case of the Christmas Carol*, *Man of La Mancha*, *A Doll's House*, *August: Osage County*, *Little Shop of Horrors*, *Hedda Gabler*, and *First Date*. Jeannie has also enjoyed working with The Olympia Family Theatre, Saint Martin's University, and South Puget Sound Community College. In Missouri, she has designed *Urinetown* and *The Music Man* with Missouri Western State University, and *The Drowsy Chaperone*, *She Loves Me*, and *Damn Yankees* for Tent Theater. In Arizona, Jeannie designed *Mama and Jack Carew* and the world premiere of *Suocera* by Hal Corley at the Theatre Artists Studio and *Big Love* with Kim Weild at Arizona State University. Jeannie holds an MFA in performance design from Arizona State University and a BA in set design from Western Washington University.

Darren Mills (he/him) - Costume Design/Wig, Hair and Makeup Design/Wardrobe Manager

Darren has designed costumes, wigs, and hair for more than 60 shows in 26 seasons. Favorites include *Cabaret*, *Deathtrap*, *Falsettos*, *Hedwig and the Angry Inch*, *Lady Day at Emerson's Bar and Grill*, *The Women*, *Man of La Mancha*, *A Doll's House*, *Ruthless!*, *I Am My Own Wife*, *August: Osage County*, *Present Laughter*, *To Kill a Mockingbird*, *Laughter On the 23rd Floor*, *Cat On a Hot Tin Roof*, *The Philadelphia Story*, *Enchanted April*, *Unexpected Tenderness*, *The Taming of the Shrew*, *The Elephant Man*, *The Rocky Horror Show*, *Intimate Apparel*, *Assassins*, *The Glass Menagerie*, *The Importance of Being Earnest* and *The Constant Wife*. Additional regional credits: *La Cage Aux Folles* and *Angels In America* (SPSCC), *Equivocation* (SMU), and *Murder Ballad* (Side-country Theater). NYC hairdressing credits: Broadway: *Phantom*, *Mamma Mia!*, *The Music Man*. Film: *The Stepford Wives*, *War of the Worlds*, *Lonesome Jim*, *The Notorious Bettie Page*. TV: *The Sopranos*.

Mark Thomason (he/him) - Lighting Design

Mark is a local lighting designer based in Tacoma and teaches technical theatre and design at Tacoma School of the Arts and occasionally at the University of Puget Sound, having spent most of the last 20 years as a lighting designer, production manager, and technical director; he also works with Zombie Orpheus Entertainment and much of his film work can be seen at www.ZombieOrpheus.com. BA in Theatre Production from Bradley University. Previously at Harlequin Productions: 20 previous shows including most recently: *The Complete Works of William Shakespeare (abridged)*, *Falsettos*, *Fun Home*, *Murder*

for Two, *Until the Flood*, *Noises Off*, *A Doll's House*, *Dry Powder*, *The Art of Racing in the Rain*, *I Am My Own Wife*, *My Name is Rachel Corrie*, *First Date*, and *The Last Five Years*. Other recent designs include *Fairview* with Empathos Theatre Company, *Puget Sound Revels* at the Rialto Theatre, and *Into The Woods* with UPS Opera. Love to Gail and Gabe.

Keith Jewell (they/them) - Sound Design

Sound is all around us, yet nearly always invisible. It contributes to a sense of place, sets mood, and provides valuable cues about the world we inhabit. Keith grew up on a diet of audio stories from NPR, ZBS, Jim Copp, Bergman and Proctor, and old-time radio. This led to a passion for using sound to tell stories. From a 1993 puppet show adaptation of King Lear in the Star Wars universe, through over a hundred and thirty other productions, Keith has had the pleasure of getting to work with exceptional designers, actors, and directors here at Harlequin for seventeen seasons, as well as sixteen seasons at Saint Martin's University. You also may have seen their work in Ripley's "Believe It Or Not." Recent and favorite Sound Designer credits here include *Cabaret*, *Deathtrap*, *Hundred Days*, *Fun Home*, *Hedwig and the Angry Inch*, *Murder for Two*, pieces throughout the 2021 Fall Repertory Season, *August: Osage County*, and *The Art of Racing in the Rain*.

Jordanna Averett (she/her) - Properties Design

Jordanna is an Olympia artist and theater creative. She loves working behind the scenes for our local theaters - most especially when she can build, paint, or otherwise get her hands messy. Recent favorites include being on the build team for String and Shadow's giant puppet show: *Or So it Would Seam*, and set designing/working the fly rail for *Hurricane Diane* with the SPSCC Theater Collective. Jordanna is grateful to be part of the huge, talented, and passionate effort that this team has put in to bring *Sweeney Todd* to our community. Infinite love and thanks to Danny.

Angi Swan (she/her) - Masterworks Accompanist

Angi grew up in a musical home and started singing and playing piano at an early age. She graduated from the University of Iowa with a Bachelor in Music Education, earned her Kodaly certification at the University of St. Thomas, and completed her Master in Music Education at Kent State University. She has taught elementary music, private piano, and voice lessons, and has held organist, bell choir, adult and children's choir director positions in various churches and community groups. Angi is a K-5 general music teacher in the North Thurston School District, a choir director for the Olympia Youth Chorus, and a worship team musician at First United Methodist Church of Olympia.

SWEENEY TODD THE DEMON BARBER OF FLEET

PRODUCTION TEAM

Gina Salerno (she/her) - Stage Manager

Since 2005, Gina has worn many hats at Harlequin. Her favorite hats are those of Company Manager, Stage Manager, and Sound Designer. Some of Gina's favorite sound designs include *A Christmas Carol* ('21, '22, '23, and soon, '24), *Pride and Prejudice*, *A Doll's House*, *Time Stands Still*, *The 39 Steps*, *To Peter Pan on Her 70th Birthday* (Harlequin), *Border Songs* (St. Martin's University; Book-It), *Equivocation*, *Polaroid Stories* and *The Last Days of Judas Iscariot* (St. Martin's University). She thanks her incredible family at Harlequin for all their love and support, especially Aaron and Percy. And the biggest thanks of all to Andy and the incomparable Miss Sauce, for supporting Mama and making her dreams come true. You make my heart complete.




Perseus "Percy" Wait (he/they)

- Assistant Stage Manager

Percy is a part-time theatre technician and actor. Previously, he has worked backstage for Harlequin in *Complete Works*, *A Christmas Carol*, *Falsettos*, and *Building Madness*. He has acted at Harlequin as Hans in *Cabaret* and at Centralia College as Hermia in *A Midsummers Night Dream* and various ensemble roles in *Shakespeare in Love* and *West Side Story*. He most recently performed in an original musical, *Reese Sigman Is Lying Completely Still*, at Central Washington University, where he studied Anthropology and Museum Studies.

Rob Taylor (he/him) - Master Electrician

Rob has served as Harlequin's Master Electrician for ten years, with significant forays into set construction and properties design. He would especially like to thank friends, colleagues, and mentors for their support and encouragement.

 <p>ADVENTURE SERIES TRACKS: ALONE ACROSS THE OUTBACK FRI OCT 25 7:00PM</p>	 <p>COCO LIVE-TO-FILM CONCERT SAT NOV 02 6:00PM</p>	 <p>AIMEE MANN FRI NOV 08 7:30PM</p>	 <p>THE HIP HOP NUTCRACKER TUE NOV 12 7:30PM</p>	 <p>JAKE SHIMABUKURO'S HOLIDAYS IN HAWAII FRI NOV 15 7:30PM</p>
 <p>SEATTLE INTERNATIONAL COMEDY COMPETITION THU NOV 21 7:30PM</p>	 <p>A MAGICAL CIRQUE CHRISTMAS SUN DEC 29 7:00PM</p>	 <p>ADVENTURE SERIES EAST MEETS WEST: IN THE FOOTSTEPS OF MARCO POLO THU JAN 09 7:00PM</p>	 <p>THE PACK DRUMLINE WED JAN 15 7:00PM</p>	 <p>THE ALUMINUM SHOW SUN JAN 19 7:00PM</p>



**24/25
SEASON**
100 YEAR ANNIVERSARY

WASHINGTON CENTER

**TICKETS ARE NOW ON SALE
FOR OUR 24/25 SEASON!**



BOX OFFICE: (360) 753-8586 • WASHINGTONCENTER.ORG • 512 WASHINGTON ST. SE • OLYMPIA, WA 98501

94.5 ROXY FM
PROUDLY SUPPORTS HARLEQUIN
ENJOY THE SHOW!



**COMMUNITY CONNECTIONS
AND INFORMATION**

**MUSIC THAT MATTERS
ENGAGING PERSONALITIES
ENERGY!**

www.945Roxy.com

CELEBRATING 100 YEARS SERVING OUR COMMUNITY 1922-2022



KGYMEDIAGROUP.COM

Creativity takes courage.
— HENRI MATISSE

Bite Me
CATERING PNW



Bite Me Catering PNW is a proud supporter of Harlequin and the Artists who perform.

 BiteMeCateringPNW.com



DOING GOOD IS PART OF OUR DNA.

Together with our employees, Heritage Bank supports hundreds of local nonprofit organizations, with donations of time, resources and money, while leveraging our banking expertise to support affordable housing and financial literacy projects that strengthen our communities.

Because we know when neighbors help neighbors, the whole community benefits. And that's true prosperity.

Learn more and read our annual Community Impact Report at heritagebanknw.com/community.



Heritage
BANK



Equal Housing Lender | Member FDIC





Shanna Paxton

Photography

Specializing in events and portraits.

(360) 529 9332

Visit www.shannapaxton.co



Share the Love

Bitter Sweet
CHOCOLATES

Bitter Sweet
CHOCOLATES

203 Columbia St NW • Olympia WA 98501

BittersweetChocolatesllc.com

HARLEQUIN

Box Office 360.786.0151
Admin. Office 360.705.3250
harlequinproductions.org

ADMINISTRATIVE STAFF

Aaron Lamb Producing Artistic Director
Joe Hyer Director of Finance
and Human Resources
Olivia Burlingame Director of Operations
and Patron Services
Helen Harvester Marketing and
Communications Director
Brennan Tucker..... Development Manager
Jered Hoffman Box Office Supervisor
Jim Kainber Capital Campaign Manager
Richard Wheeler Environmental Services
John Serembe Graphic Designer
Lynette Charters..... Gallery Curator



Harlequin Productions is a member of Theatre Communications Group (TCG), Thurston County Visitor and Convention Bureau, Theatre Puget Sound (TPS), Washington State Arts Alliance, Thurston County Chamber, Yelm Area Chamber of Commerce, Olympia Downtown Association, Economic Development Council of Thurston County and South Sound Partners for Philanthropy.



STAFF

Alexandra Arrieche Music Director
Jennifer Hermann Executive Director
Renée Zimmerman Executive Assistant
Anna Barbee General Manager
Britt Madsen Personnel Coordinator
Lucy Winter Music Librarian
Mando Surita ... Marketing & Communications Manager
Bernadette Rivard Accounting



The Olympia Symphony Orchestra is a member of the League of American Orchestras, Northwest Orchestras, Olympia Downtown Alliance, Thurston County Chamber of Commerce, Olympia-Lacey-Tumwater Visitor & Convention Bureau, Washington Festivals and Events Association, and South Sound Partners for Philanthropy.

PRODUCTION STAFF

Bruce Haasl Technical Director
Gerald B. Browning Production Coordinator
Gina Salerno Company Manager
Melanie Ransom Costume Department Manager
Olivia Burlingame Lighting Supervisor
Keith Jewell Sound Supervisor
Gerald B. Browning Scenic Charge Artist
Rob Taylor Master Electrician
Ethan Bujeaud Master Carpenter
Nick Price Carpenter
Lee W. Lynch Scenic Painter

BOARD OF DIRECTORS

Ellen Wolfhagen President
Janet Mueller Vice President
Si Sarton Secretary
Geoffrey Crooks Treasurer
Eric Belgau, Maria Coffman, Ben Cushman, Laurie Dolan, Kate Faro, Eleise Moore, James D. Reddick, Charli Terminelli, Renee Radcliff Sinclair Members

Admin Office 360.753.0074
olympiasymphony.org

BOARD OF DIRECTORS

Lena Mendiola President
Laurel Gonzalo Vice President
Chris Barnes Secretary
Craig Stephens Treasurer
Natalie Coblentz, Eric Charneski, Anthony Enzler, Wes Martin, Todd Monohon, Kelly Seago Beaubien, Bill Tweit Members
Renee Ries Lifetime Trustee

MUTUAL MEANS MORE.

PHILANTHROPY



Extraordinary giving for local impact.

ACCOUNTABILITY



We answer to you, not shareholders.

100% LOCAL

Relationships with hometown care & insight.



OlyFed

BANKING THAT'S MUTUAL

olyfed.com



VISIT US

On your way to the show

Downtown Olympia
550 S. Capital Way

Olympia
Farmers Market
111 Market St. NE

Olympia Tasting Room
200 Market St. NE



DANCING GOATS®
COFFEE

DANCINGGOATS.COM

A **vibrant arts culture** attracts talent and investment and supports a **prosperous community.**

In its 150th year, the Thurston County Chamber is proud to support Harlequin Productions.

150



Building Prosperity Since 1874



CAPITOL CITY PRESS

print positive

PRINT - MAIL - PACKAGING - WIDE FORMAT

CLEARLY DELIVERING YOUR MESSAGE FOR OVER 50 YEARS

360.943.3556

WWW.CAPITOLCITYPRESS.COM

2975 37TH AVE SW, TUMWATER, WA 98512

HARLEQUIN INDIVIDUAL CONTRIBUTORS (September 23, 2023 to September 23, 2024)

Artistic Director's Circle

From \$10,000

Mary Ellen & Greg Psaltis ☺

Producer's Circle

From \$5,000

Kenny & Marlene Alhaddeff

Carlson Family

Beth Morrison
& Geoffrey Crooks

James & Sharon Reddick

Artists Circle

From \$2,500

Beth Dubey ☺

Anonymous

Diana Larsen-Mills
& Kenneth Guza

Janet Mueller
& Gerald Magnoni ☺

Melanie
& Timothy Ransom ☺

Oscar & Barbara Soule

Robert Walker

Haleigh & Mike Werner

Ellen & Carl Wolfhagen ☺

Benefactor

From \$1,000

Sally Alhaddeff
& Bob Sundstrom

Richard
& Mary Bartholomew
Kristine & David Bartruff

Eric Belgau

Mary Jean Berkstresser

Daniel Berschauer
& Phyllis Edwards

Dick & Renee Binns

John Brottem

Debra Burnison-Weitzel ☺

Michael Partlow
& John Carmichael

Judy Covell
& Mike Kretzler ☺

William & Joan Cullen

Ben & Deborah Cushman ☺

Kevin Feely

Paula & Rick Finch

Jay Goldstein
& Jill Rosenkrantz

Arne & Rose Gundersen

Aaron Lamb
& Helen Harvester ☺

Denny Heck

Helen & Hank Henry

John & Cindy Hough

Richard & Dianne Hurst ☺

Joe Hyer

Sandra & Ken Kelnhofer

Frank Kersul

Michael & Katherine Krysty

Gordon & Nancy Lamb ☺

Carol & Don Law

Vicki Lovegren ☺

Lizz Maunz & Art Simpson

David & Celia Nightingale ☺

Julie Rosmond

Amanda Sue Rudisill
& Michael Stapleton ☺

George Sharp

Renee Sinclair

Todd Stamm
& Melanie Tyler

Gloria & Skip Strait

April Works

Pam & Alan Anderson

Investor

\$25/mo. or \$300/yr.

Thomsen Abbott
& Teresa Scharff ☺

Melissa Allen

Katy Beattie

Tamara Black

George & Karen Bray

Sue Bredensteiner

Larry & Donna Brooke ☺

Gerald Browning ☺

Carolyn Burreson
& Robert Burreson

Nicole Butigan

Marsha Callahan

Christopher Carlson ☺

Pat & Warren Carlson ☺

Steve Carras

W. Ian Christopher

Dawn Stremel
& Ruth Conn ☺

Lanette Corzine

Lowell & Ida Dightman

Arthur & Laurie Dolan

Candace Espeseth ☺

Martin Eussen

Mary Ann Firmin

Ronelle Funk

Rich Gailey
& Laurie Rogers ☺

Lee Ann Gekas
& Michael Greenstreet

Brian Geppert

Marjorie & John Gray ☺

Michael Gray
& Jackie Nordquist Gray

Marlyce and Frank Hansen

Laura & Erik Hanson

Judith & Steve Harvester ☺

Gillian Haws ☺

Kathryn Hegtvedt
& Tom Rozwod ☺

Karen Hennegan ☺

Susan Hettinger

Linda & David Hoffman ☺

James Hovis

Yen Huynh

Sondra & Dean Iverson

Cynthia Ivey ☺

Keith Jewell
& Sara Schwartz Jewell ☺

Mark & Laura Johnson

Marlisa Johnson ☺

Jim Kainber ☺

Marie Kirk ☺

Rob Kirkwood
& Valerie Hammett

Paul Knox
& Sara Holt-Knox ☺

Helen & John Kramer ☺

Maureen Fitzgerald
& James Krupke ☺

Amanda Kuehn

Barbara & Leif Lantz ☺

Jenine Laughead

Collum & Martha Liska ☺

Linda Luebcke

Jared Mason-Gere

Corey McDaniel
& Alber Sucupira

Carol McKinley

Janet McLane ☺

Pamela Meredith ☺

Patti & Victor Moore ☺

Edward Morgan ☺

Meredith & Tom O'Kelley ☺

Linda & Burke O'Leary

Stephen O'Leary

Wayne & Betsy Olsen

Shanna Paxton

Susan Perkins ☺

Cynthia & David Pratt

Diana & Stephen Purvine ☺

Matthew Reese

Donna & Jack Rice

Larry & Leah Richards

John Rosenberg
& Nancy Faaren

Peter
& Cynthia Sanderson ☺

Si Sarton

Robert & Elisabeth Schafer

Mary Schaefer's ☺

Barbara & Lloyd Schneider

Diane & Dean Schwickerath

Bruce Silverman
& Courtney Nevitt

JoAnn & Jared Snyder

Helen Tafajian

Brennan Tucker

Daniel & Cindy Tufford ☺

Juliet & John Van Eenwyk

Barbara Walker-Tindall

Nancy & Michael Walsh ☺

John Weber

Diana Weeden

Mary Wilkinson
& Joe Ford ☺

Donald & Judy Wilson ☺

Mary Winkler
& Alex Broman

Bonnie Wood ☺

Barb Wilkins

HARLEQUIN INDIVIDUAL CONTRIBUTORS (September 23, 2023 to September 23, 2024)

Partner

\$10/mo. or \$100/yr.

Jim Albert
Janet Ball
& David Monthie ☞
Katherine Baros Friedt
& Paul Seabert ☞
Mary Barrett
Damian Baynes
Lois Beck
Virginia Beekmann
Bonnie Benard ☞
Karen Bray
Peggy Brink
Catherine Brooke
Annie Laurie Burke ☞
Linda Carbonneau
Kathy & Dave Carlson
Ashley Chandler
Sherry Chilcutt & Bill Halbert
Donald Chinn
Antonio & Aleli Chua
Bettie & Doug Cochran
Deborah Corliss
& Marsha Majors ☞

Rachel Crum
Elizabeth Curneen
Jon Curtis
Vern & Lynne Dearing
Francine Eide
Susan Finlay ☞
Lea Flanagan
Nora Gant
Patricia J Gee
Fred & Mary Gentry
Molly Gilmore
Tracey & Tom Glembin ☞
Robert Godwin
Thomas Gordon Rozwod
Elizabeth & Kevan Hagen ☞
Robert Hartsell
& Kathy Rosmond
Chris Hawkins
Marcia Hopkins ☞
Kathleen Houston ☞
Nelson Hunt
Patricia Huntsman
Kathleen & Roger Huston
Stephen Hyer
Nancy & Tom Inui

Charlie & Mary Isaacson
Derek Jenkins
Ericka Kaplan ☞
Stephanie & Dennis Kellog ☞
Kevin & Kelly Kerr ☞
Judy Kimeldorf
George & Linda Lamb
Ronald Lavigne ☞
Richard & Brenda Lehman
Paul & Robyn Malmberg ☞
John Mark Wagner
Heather Matthews
Karol May
Aslan Meade
Jeny Meconi
William Moore
& Kathe Taylor
Michael & Irene Moore ☞
Terry Moore
Joan Neff
Jamie Nixon
Jane & David Nowitz
Vanessa Olson
Amanda Overstreet
Kathy Perry ☞

Colleen Power ☞
Henry & Leslie Romer
Diane Rudeen
Vernene Scheurer ☞
Joy Scholz
& Greg Kirkpatrick ☞
John & Lynette Serembe ☞
David Sharpes
& Joan Mohler
Matt Shimkus
& Emilie Rommel-Shimkus ☞
Janet & Ken Snider
Sandra & Dave Spencer
Mary Stanton-Anderson
& Roger Clark ☞
Cherie & Gary Stedman ☞
Ken & Dawn Stone
David & Betty Sugarman
Bruce & Olga Sutherland ☞
Charli Terminelli
Steve Tillman
Pandora Touart
Connie & Bill Vasek
Sue Vickerman ☞
Cynthia Wilson
& Bill Graeber ☞
Leah Wilson ☞

☞ Sustaining Membership Donor

Photo by Shanna Paxton Photography



HARLEQUIN CORPORATE & FOUNDATION CONTRIBUTORS

Alhadeff Family
Charitable Fund
America Online Giving
ArtsFund
Capital Heating and
Cooling
Capitol City Press
Compass Rose
Deena McClain
Living Trust
Heritage Bank -
Downtown Olympia

Kroger - Fred Meyer
Rebate Program
M J Murdock
Charitable Trust
Navigate Financial
Nicholson & Associates
Insurance, LLC
Nicole's Bar
Olympia Federal Savings
PARC Foundation
PayPal Giving Fund

Puget Sound Energy
Republic Services
Richard P. Hoffman Trust
Shubert Foundation
Stormans Inc.
Swing Wine Bar
And Cafe
The Community
Foundation of South
Puget Sound's Vannerson
Family Advised Fund

The Norcliffe Foundation
Tom Badger & Wendy
Gerstel Giving Fund
TVW
Venables Pest
Management
Washington State
Arts Commission
Washington State
Combined Fund Drive
WA State Department
of Commerce

HARLEQUIN TRUSTED BUSINESS PARTNERS AND UNDERWRITERS

Bite Me Catering PNW
Bittersweet Chocolates
Capital Heating & Cooling
Captain Little
Compass Rose
Dancing Goats Coffee
Heritage Bank
KGY 95.3

KNKX 88.5
Mighty Tripod
MSGs Architects
Navigate Financial
Nicholson & Associates
Nicole's Bar
Octopas Cafe &
Restaurant
OlyArts

Olympia Downtown
Association
Olympia Federal Savings
Olympia Gear Exchange
Olympia Orthopedic
Associates
PARC Foundation
Rainier Fabrics
Roxy 94.5

Shanna Paxton
Photography
Swing Wine Bar
The Washington Center
for the Performing Arts
Thurston County
Chamber
of Commerce
Uptown Grill

CHARTER FRIENDS OF THE COSTUME SHOP

Sally Alhadeff
Mary Jean Berkstresser
Tamara Black
Karey Griesman

Helen & Hank Henry
Diana Larsen-Mills
Beth Morrison

Melanie Ransom
Si Sarton
Pandora Touart

Barb Walker-Tindall
Diane Weeden
April Works

Thank you for supporting **Real. Live. Theatre.**

OLYMPIA SYMPHONY INDIVIDUAL CONTRIBUTORS (July 1, 2023 to June 30, 2024)

Kathy Adams	David Cheal	Michael Gurling	Beth Kober
Jennie Adkins	Kelly Clem	Phil Gutierrez	Dan Konopatzke
Michael Aherne	Ruth Conn	Marda Gutierrez	Gecia Kriens
Beth Albertson	Nancy Connery	Jonathan Halling	Linda Lamb
Twighla Allen	Peter Cook	Judi Hambrick	Rachel Landowski
Krina Allison	Rose Cope	Nancy Hamilton	Brenda Lashley
Greg Allison	Andrew Corn	Suzanne Hansen	Don Law
Anonymous	Beverly Court	Kari Hanson	Brenda Lehman
Geoff Apgar	Rachel Crum	Stephen Happenny	Ruth Lehman
Margaret Arnett	Ralph Cumberland	Milt Harper	Bain Lesley
Pamela Baer	Margaret Curl	Rebecca Harriett	Elena Licxandru
Janet Ball	Jeffrey Curran	Mary Beth Harrison	Chad Lincoln
Ernesta Ballard	Trina Delaney	Mary Jo Hartman	Tom Lockhart
F Catherine Bander	Allison Dellwo	Beth Harvey	Marsha Lorentson
Jill Barnes	Dusti Demarest	Debora Hathaway	Laurie Maricle
Chris Barnes	John DeRuntz	Miriam Hathaway	Susan Markey
Patricia Barnes	Maggie DeRuntz	Chris Hawkins	Robyn Martin
Judith Bartels	Raquel Dewitt	Stephen Henderson	Wes Martin
Kristine Bartruff	Donna Doerer	Jennifer Hermann	Sheila McCartan
Bill Bassett	Aytug Dolek	Scott Hermann	Tom McDonald
Annette Baumgartner	Marguerite Donaldson	Susan Hettinger	James McElroy
Miriam Bausch	Cheryl Duryea	Stacy Hicks	Marcia McLaughlin
Joseph Beaubien	Jennifer Dye	Elsie Higgins	Molly McNamara
Lois Beck	Anne Edge	Kathryn Hillig	Joe McNolty
Silvia Behrend	William Elledge	Candice Holcombe	Lena Mendiola
Michael Bell	Marian Evans	Anita Holtcamp	Yuki Mendiola
Becky Beswick	Jeffrey Even	Amy Beth Horman	Andy Meyer
Catherine Bloomfield	Sheila Fay	Sherri Hruby	Karen Meyer
Art Boardman	Caroline Fenn	Maria Huang	TD Mitchell
Mary Boston	Jennifer Ferguson	Abby Hughes	Diane Mitchell
Susan Botarelli	Steve Ferguson	Stephanie Hulcher	Todd Monohon
Jean-Luc Bouthemy	Steve Ferguson	Richard Hurst	Beth Morrison
Jennifer Bowman	Mary Ferris	William Hyslop	James Moruzzi
Tim Boyd	Mimi Fields	Denise Inglin	Rose Mylroie
Linda Boyer	Mary Fleckenstein	Nancy Inui	Deb Nickerson
Kelly Brannock	Brianna Flott	Thomas Inui	Nancy Nole
Yvonne Braune	Lindsey Ford	Charles Isaacson	Jill Nordstrom
Susan Breidenbach	Adam Fox	Eric Jackson	Janet Norris
Joanna Briese	Karen Fraser	Linda Jacobsen	Lin O'Leary
Ruth Brigden	Anita Freeman	Kristen Jaudon	Birdie O'Neill
James Broman	Alan Fuller	Patricia Johnson	Milton Oster
Mark Brown	Jay Fuller	Donna Jones	Leslie Owen
Nancy Brown	Leonor Fuller	Muriel Jorgensen	Josie Padget
Grace Brown	Rich Gailey	Leyton Jump	Sean Padget
Lynn Brunton	Brian Geddes	Joy Junkert	Leslie Panowicz Ceesay
AnnieLaurie Burke	Clark Gilman	Judith Keithley	Sandra Parker
Jodie Butler	Molly Gilmore	Katie Kemp	John Parry
Suzanne Byron	Richard Gleckler	Molly Kennedy	Stephanie Paulson
Carol Canine West	Emily Golan	Alia Kennedy	Lisa Pearson
Paul Capra	Andrew Goldstein	Laura Kerekes	Christine Peck
Gail Carey	Laurel Gonzalo	Judy Kimeldorf	Robert Peck
Kelli Carmony	Crissy Greenberg	Nicole Kinney	Jeff Peltier
Audrey Chaiclin	Rick Greenfield	Nancy Kmet	Kayla Perez
Joshua Chaplo	Erin Greenlee	Peter Kmet	Ulrike Petermann
Eric Charneski	Heather Grob	Lois Kniss	Edgar Phillips
Luellen Charneski	Debra Guillot	Lyndi Knox	

OLYMPIA SYMPHONY INDIVIDUAL CONTRIBUTORS (July 1, 2023 to June 30, 2024)

Jean Phillips
Chris Playstead
Peter Plumley
Valerie Pollet
Ember Poon
Bill Pope
Laurence Poplack
David Pratt
Susan Pratt
Charles Pyles
Vanessa Rabito
Cynthia Rae
Vel Rajagopal
Stefanie Randolph
Cindy Renander
Richenda Richardson
V. Risdon
Bernadette Rivard
John Robinson
Pamela Rodman
Sonja Ronning
Anita Rose
Will Rozon
Amanda Sue Rudisill
Kristi Rutledge
Douglas Ryan
Sarah Saavedra
Ann Saffery

Kati Sagawa
Renee Schelper-Zimmerman
Chris Schrock
Conny Schrock
Greg Schuler
Amy Schutte
Dylan Scott
Kelly Seago Beaubien
Laurel Seaman
Richard Seaman
Erik Seversen
Carol Severson
Marcy Sherman
Oksana Skillings
Ann Smalley
Mary Smidt
Anette Smith
R Peggy Smith
Scott Smitherman
Julie Sokolik
Mary Solberg
Anita Solt
Barbara Soule
Sandra Spencer
Terri Spice
Therese Sprunger
Katrin St.Clair

John Steinbrink
Craig Stephens
Ann Stephenson
Cynthia Stewart
Heather Stoker
Dawn Stremel
Diane Stuart
Matthew Sullenberger
Bruce Sutherland
Olga Sutherland
Paul Swanda
Trisha Swanson
Geoff Swett
Daniel Szekely
Helen Tafejian
Debra Tainer
Frances Tanaka
Mary Taylor Monger
Joe Templeton
Kenneth Thiessen
Michelle Tiedeman
Haruno Tokura
Melanie Triebel
Ryan Troy
Kipton Troy
Kris Tucker
Bill Tweit
Jackie Uhlemann

Brian VanCamp
Sander Verlaan
Larry Vevig
Christina Volkmann
Jutta Wabinga
Michael Waiste
Christina Walsh
ShiauYun Wang
Emily Waugh
Meg Weiss
Julia Westby
Trudy White
John Wiens
Dean Wiese
Claire Williams
Jeanette Willis
Susan Wilson
Aurora Winters
Nancy Winters
Bill Wittgow
Michele Wolfe Jorgenson
Jocelyn Wood
Katherine Wright
Stefany Zelepuza
Verena Zeller
Huiqiang Zhao
Michael Zimmerman
Diane Zisman

Aaron Lamb, Eric Polani Jensen and Alexandra Arrieche - Photo by Shanna Paxton Photography



OLYMPIA SYMPHONY CORPORATE & FOUNDATION CONTRIBUTORS

American Online Giving Foundation
Andrew Family Foundation
ArtsFund
Bittersweet Chocolates
City of Olympia
Commencement Bank
Community Foundation of South
Puget Sound
Cynara Restaurant and Lounge

Dawkins Charitable Trust
Iron Rabbit Restaurant & Bar
Kiley Juergens Wealth Management
National Endowment for the Arts
Nisqually Indian Tribe
Olympia Federal Savings
Olympic Dermatology and Laser Clinic
Olympic Rental and Landlord Services
PARC Foundation of Thurston County

PayPal Giving Fund
Pizzeria La Gitana
Squaxin Island Tribe
Storman's Inc
Umpqua Bank
Washington State Arts Commission
(ArtsWA)
Washington State Combined Fund
Drive

OLYMPIA SYMPHONY TRUSTED BUSINESS PARTNERS AND UNDERWRITERS

Advitica Financial Planning
Ballet Northwest
B3 Business Solutions
Bite Me Catering
Bridge Music Project
Carnegie Hall Weill Music Institute
Celebrations: The Party Store
Chamber Orchestra of the Springs
City of Tumwater
Delmonico's Butchery
Hands on Children's Museum

Harlequin Productions
Harvard Girl World Services
KXXO Mixx 96.1
L & E Bottling
Lemon Family Dental
Masterworks Choral Ensemble
Nate Burgher Photography
Olympia Community Solar
Olympia High School
Olympia School District
Pacific Sound and Stage

Seattle Youth Symphony Orchestra
Shanna Paxton Photography
Showcase Magazine
Sound Business Brokers
South Puget Sound Community
College
Student Orchestras of Greater
Olympia (SOGO)
Sundodger Ventures LLC
Walker & Krause Dental Team
The Washington Center for the
Performing Arts

OLYMPIA SYMPHONY MUSICIAN SPONSORS

Adenike Adebisi
Sue Breidenbach
Nancy Connery
Peter Cook
Corinne DeAngeles
Cynara Restaurant & Lounge
Reade Dobro
Fred & Mary Gentry

Les Havana
Steve & Judy Henderson
Iron Rabbit Restaurant & Bar
Leyton Jump
George & Linda Lamb
Tom & Atsuko McDonald
Diane Mitchell & Peter Odencrans

Deb Nickerson
Mike Ryherd
R Peggy Smith
Dawn Stremel
Brian VanCamp
Don & Christina Volkmann
Zimmerman Family

JOIN US AND RECEIVE MEMBER BENEFITS

Include a tax-deductible donation with your subscription and help Harlequin create Real. Live. Theatre. for years to come. As a thank you, you'll receive the exciting benefits below.

In addition, **all members** at the Partner level and above receive 25% off concessions for the year.
For full benefit descriptions, please visit: harlequinproductions.org/membership-in-2024

	Partner \$10/mo. or \$100/yr	Investor \$25/mo. or \$300/yr	Benefactor From \$1,000	Artists' Circle From \$2,500	Producers' Circle From \$5,000
Member pricing at concessions	✓	✓	✓	✓	✓
Name in program and on website	✓	✓	✓	✓	✓
Invite for two to a technical dress rehearsal		✓	✓	✓	✓
Invite for two to attend an artistic director's brunch			✓	✓	✓
Invite for two to a special donor party				✓	✓
Invite for two to the stage manager's experience					✓
Complimentary tickets to the 2024 Gala					✓

Artistic Director's Circle
From \$10,000

Artistic Director's Circle benefits are highly personalized.
If you are interested in giving at this level, please contact Brennan Tucker at: brennan@harlequinproductions.org

SUSTAINING MEMBERSHIP

Have you considered a sustaining monthly donation?
It is a no-hassle way to make a huge impact.
Monthly donations give Harlequin financial planning power
with reliable monthly forecasting.



Join our 100+ sustaining member group!

Find out more and sign up online
at harlequinproductions.org/membership-in-2023

LEGACY CIRCLE

Leaving a gift to Harlequin in your will ensures our security to carry out our mission to create lasting impacts that benefit our community.

Already have Harlequin in your plans? Be sure to let us know because Legacy Circle members automatically receive our highest level of member benefits!

For more information contact Brennan Tucker

brennan@harlequinproductions.org

360-705-3250



Family owned and operated for three generations, Capital Heating, Cooling, Plumbing & Electric is run by the Schmidtke brothers. Pictured above are Bill, Chuck and Dean, who are proud to carry on the family tradition of customer satisfaction and quality service

NOW OFFERING HEATING, COOLING, PLUMBING & ELECTRIC HOME SERVICES

In addition to our heating, cooling, and sheet metal services, we now offer full-service residential and commercial plumbing products and electrical services In the Southsound area.



Scan to Schedule or for Information

Call or Text 360.491.7450 or Visit ComfortSince1937.com

Supporting the Arts and Our Community for Four Generations



HEATING ■ COOLING ■ PLUMBING ■ ELECTRIC

DELIVERING COMFORT SINCE 1937

License: #CAPITHC9483N3

